

red red road

luke howard

G

open

G C G

Bm Em

Bm Em D

F Δ Em A/C \sharp C G/B

Am C Δ F Δ

1. G

2. Em 9

Em 9 to coda

F Δ

D Δ

F Δ

G Δ^9

open

2 solos - each solo takes this form

G C^Δ

G Gadd⁹

Bm Em⁷

D


F^Δ Em⁷

A/C[#] C G/B Am

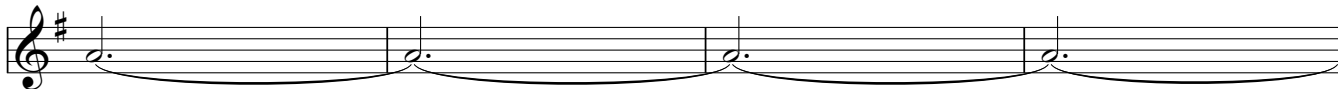
1. 3. 4...
F^{Δ9} G

2. F^{Δ9}
DS al coda

Em⁹

 coda

F^Δ



D^Δ



F^Δ



G^{Δ9}

A

Bm

C

D



open

Em¹¹

F[#]m¹¹

